

Name _____

Address _____

Street

Town

Phone

Current 4-H Age _____

Years in 4-H _____

Years in Poultry Project _____

Date of Show _____

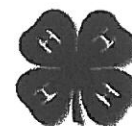
Record Started _____
Month Day Year

Record Closed _____
Month Day Year

Indicate which market specie(s) of market birds are included in this journal.

Note: This journal must contain records for all units to be sold at fair. Journal (including project pictures) should be presented for judging in a binder and should contain records from previous years market poultry projects.

- Turkey
- Duck
- Goose
- Roaster Chicken
- Fryer Chicken



Project Information

ID= T-Turkey, D-Duck, G-Goose, Cr-Chicken Roaster, Cf-Chicken Fryer

Bird ID	Number Of Birds	Date Of Arrival	Breed	Purchase Price at Start	Died	Sold	Kept

Weight Records For Meat Birds- Unit 1

Weights are to be taken on all birds weekly

ID of Bird	Wt	Wt	Wt	Wt	Wt	Wt	Wt	Wt	Wt	Wt	Wt

ID of Bird	Wt	Wt	Wt	Wt	Wt	Wt

Weight Records for Meat Birds- Unit 2

Weights are to be taken on all birds weekly

ID of Bird	Wt	Wt	Wt	Wt	Wt	Wt	Wt	Wt	Wt	Wt	Wt

ID of Bird	Wt	Wt	Wt	Wt	Wt	Wt

Feed Consumption Chart

Weigh the amount of feed given to market birds weekly

Week	Weight of Feed	Week	Weight of Feed
1		9	
2		10	
3		11	
4		12	
5		13	
6		14	
7		15	
8		16	
		17	

Expenses

Date	ANY EXPENSES FOR MARKET BIRDS BEDDING, FEED, MEDICINE ETC.....	Cost

Educational Section

Diseases and Parasites

This section is to be done on a separate sheet of paper typed or written neatly.

Juniors- Choose ONE disease OR parasite and tell the symptoms, cure and any preventive measures you can take, must be a different disease or parasite for each year you are a junior.

Intermediate-Choose ONE disease AND parasite and tell symptoms, cure and any preventive measures you can take, must be different disease and parasite for each year and different from junior years also

Senior-Choose TWO diseases and parasites BUT they can be from previous years but you must be more in-depth

Questions

This section is also to be done on a separate sheet of paper typed or written neatly.

1. What did you do to ensure a quality bird for fair and your buyer?
2. How often did you clean your pens? What kind of bedding did you use and why?
3. What type or types of housing do you have for your birds and what precautions did you take toward predators, heat and cold? (be specific and show pictures)

***Be sure to include pictures of you and your birds from beginning to end.**

ANATOMY

Label only the market bird or birds you are taking to fair.

Juniors-12 parts

Intermediates- 15 parts

Seniors-20+parts

Project Summary

Inventory-

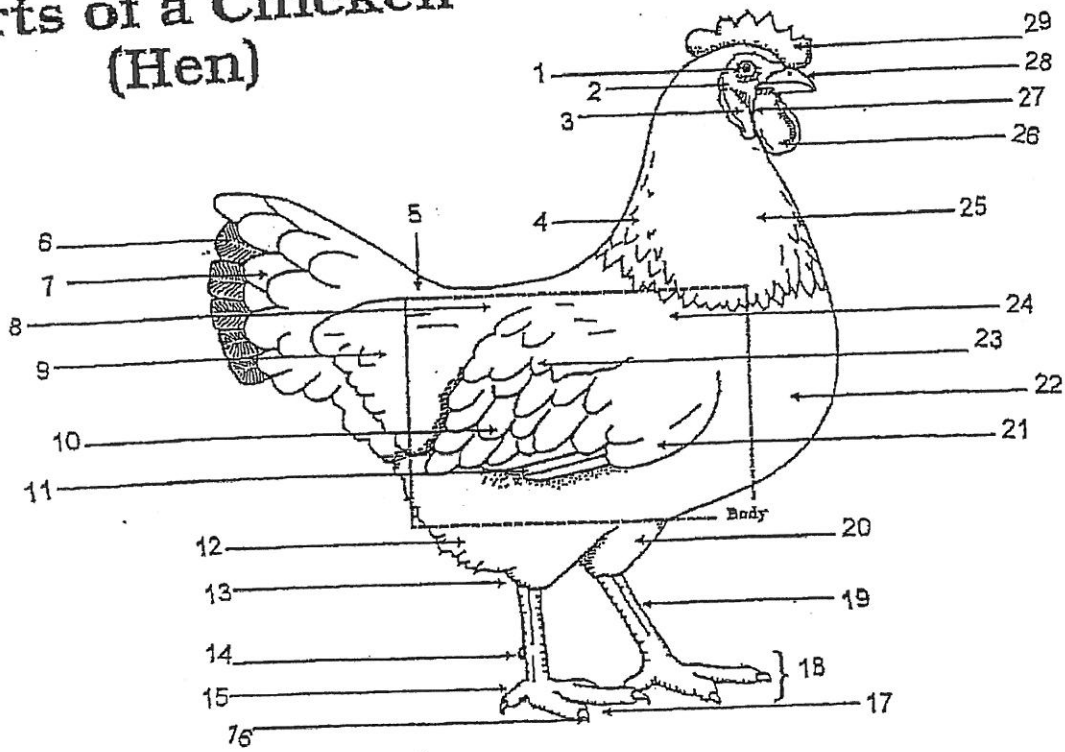
1. Type of bird _____
2. Number of birds at beginning of project _____
3. Number of birds at close of project _____
4. Number of birds to be sold at fair _____
5. Total cost of feed for birds _____
6. Other expenses to raise birds start to finish _____
(Manure fees, bedding, medicine etc...)

Project Summary

Inventory-

1. Type of bird _____
2. Number of birds at beginning of project _____
3. Number of birds at close of project _____
4. Number of birds to be sold at fair _____
5. Total cost of feed for birds _____
6. Other expenses to raise birds start to finish _____
(Manure fees, bedding, medicine etc....)

Parts of a Chicken (Hen)



POULTRY
LEARNING LABORATORY KIT

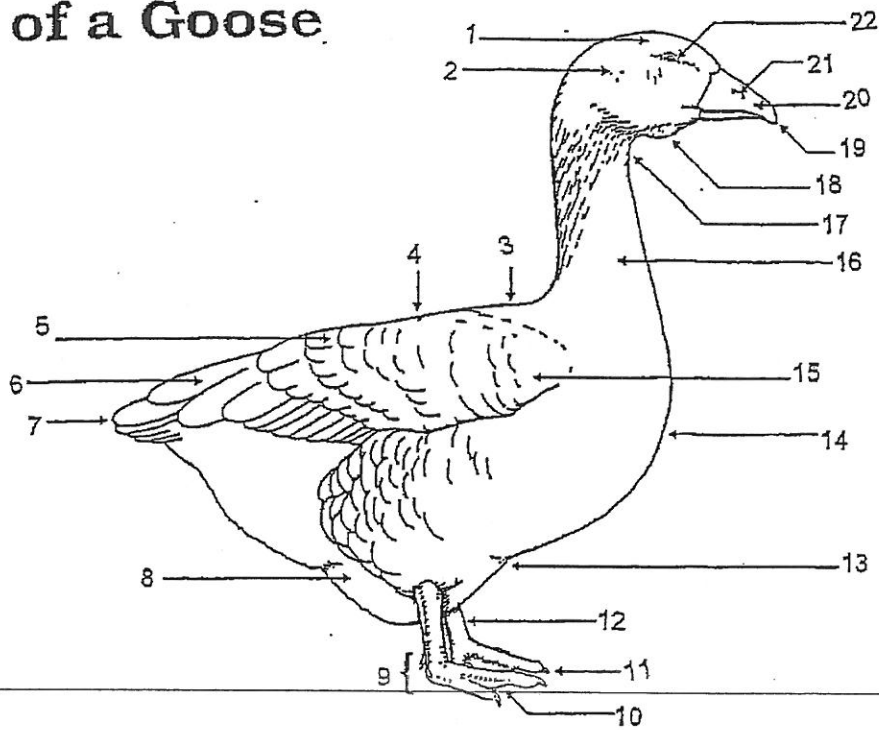
Animal Care and Production
Youth Education Program

Product distribution through the Curriculum Materials Service

- 1 _____
- 2 _____
- 3 _____
- 4 _____
- 5 _____
- 6 _____
- 7 _____
- 8 _____
- 9 _____
- 10 _____
- 11 _____
- 12 _____
- 13 _____
- 14 _____
- 15 _____

- 16 _____
- 17 _____
- 18 _____
- 19 _____
- 20 _____
- 21 _____
- 22 _____
- 23 _____
- 24 _____
- 25 _____
- 26 _____
- 27 _____
- 28 _____
- 29 _____

Parts of a Goose



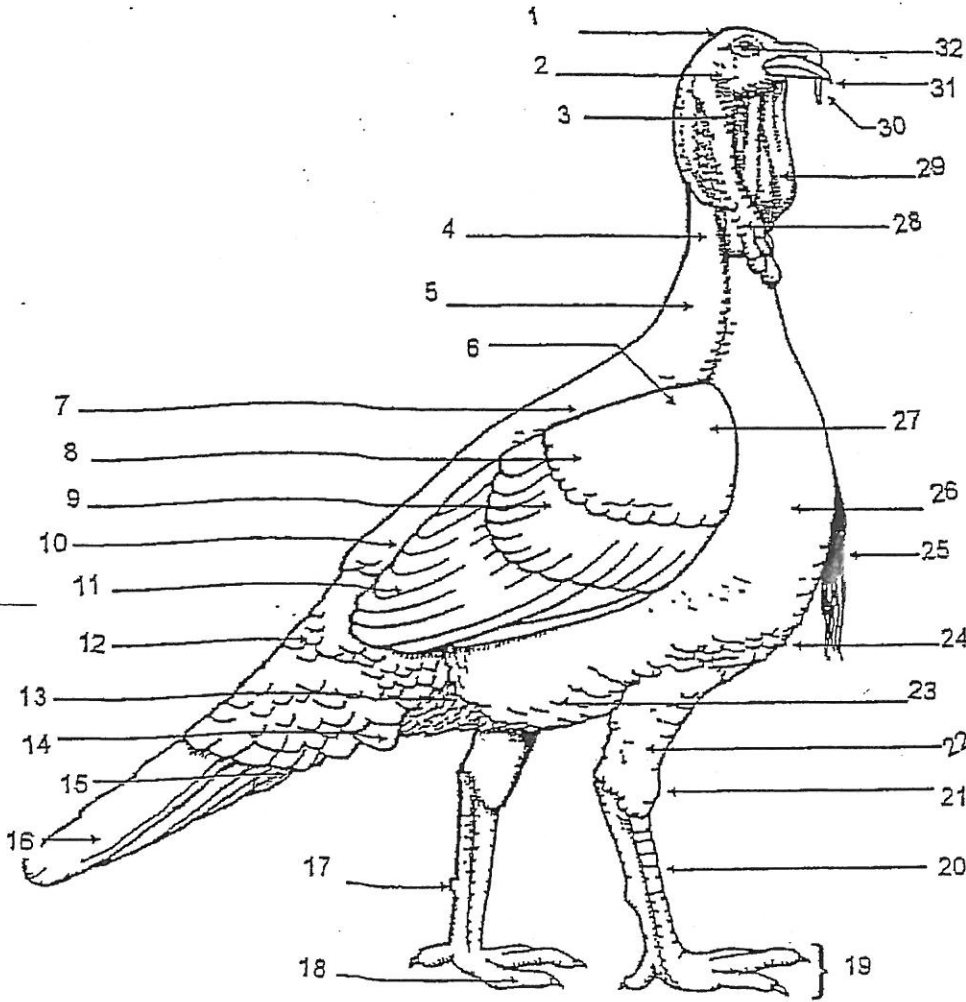
Animal Care and Production:
Youth Education Program

Product distribution through the Curriculum Materials Service

- 1 _____
- 2 _____
- 3 _____
- 4 _____
- 5 _____
- 6 _____
- 7 _____
- 8 _____
- 9 _____
- 10 _____
- 11 _____

- 12 _____
- 13 _____
- 14 _____
- 15 _____
- 16 _____
- 17 _____
- 18 _____
- 19 _____
- 20 _____
- 21 _____
- 22 _____

Parts of a Turkey



- 10 _____
- 11 _____
- 12 _____
- 13 _____
- 14 _____
- 15 _____
- 16 _____
- 17 _____
- 18 _____
- 19 _____
- 20 _____
- 21 _____
- 22 _____
- 23 _____
- 24 _____
- 25 _____
- 26 _____
- 27 _____
- 28 _____
- 29 _____
- 30 _____
- 31 _____
- 32 _____

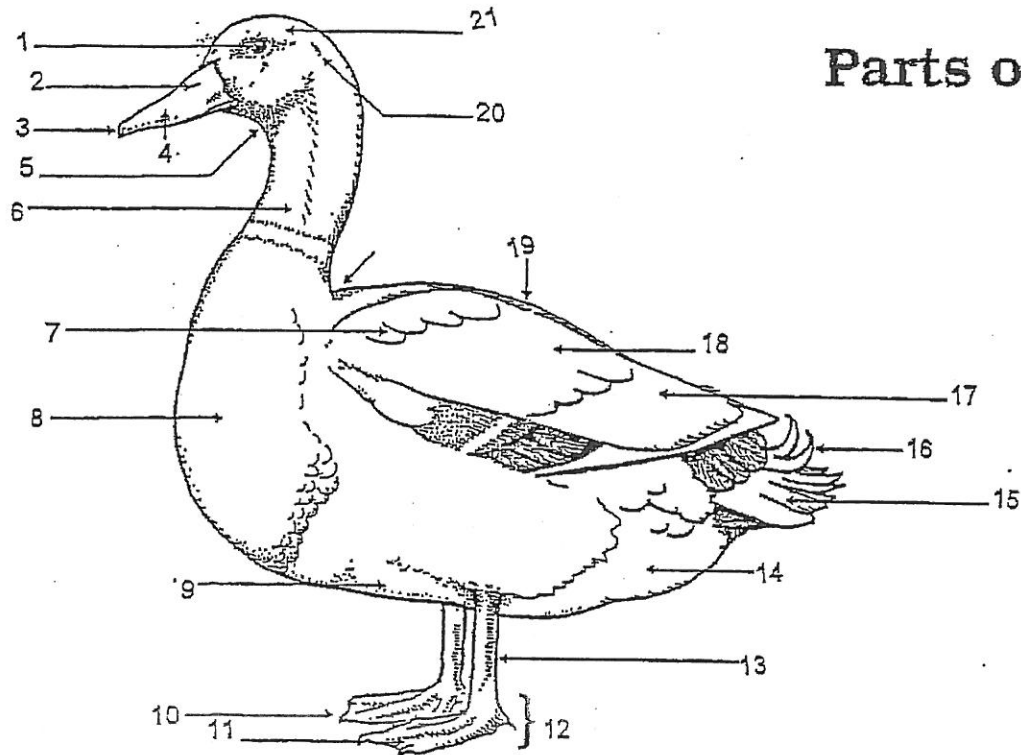


Animal Care and Production: Youth Education Program

Product distribution through the Curriculum Materials Service

- 1 _____
- 2 _____
- 3 _____
- 4 _____
- 5 _____
- 6 _____
- 7 _____
- 8 _____
- 9 _____

Parts of a Duck



POULTRY
LEARNING LABORATORY KIT

Animal Care and Production
Youth Education Program

Product distributed through the Curriculum Materials Service

- 1 _____
- 2 _____
- 3 _____
- 4 _____
- 5 _____
- 6 _____
- 7 _____
- 8 _____
- 9 _____
- 10 _____
- 11 _____

- 12 _____
- 13 _____
- 14 _____
- 15 _____
- 16 _____
- 17 _____
- 18 _____
- 19 _____
- 20 _____
- 21 _____